

Kindergarten Information Night 2021





**Welcome to
KINDERGARTEN!**



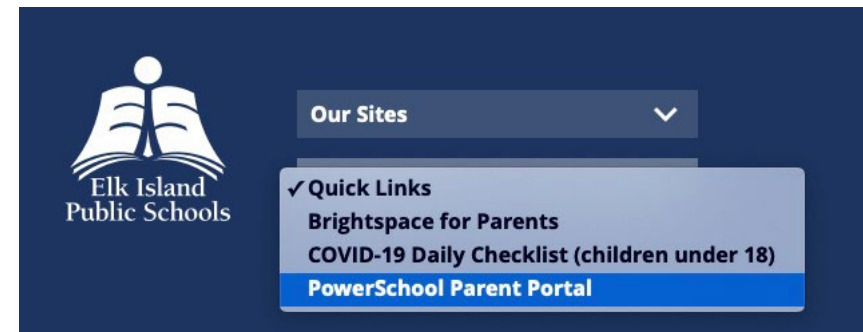
Learning Areas

- Early literacy
- Mathematics
- Citizenship and identity
- Environment and community awareness
- Personal and social responsibility
- Physical skills and well-being
- Creative expression

PowerSchool Parent Portal

- Online access to your child's end of the year report card, attendance and school fees
- One Parent Portal account to link all children in the family together
- Your account follows each student as they move through the Division

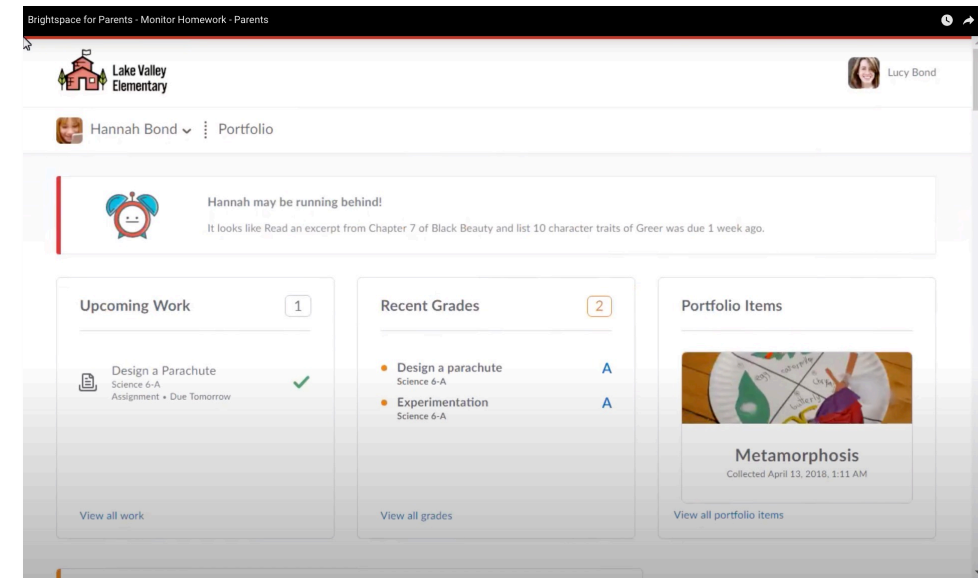
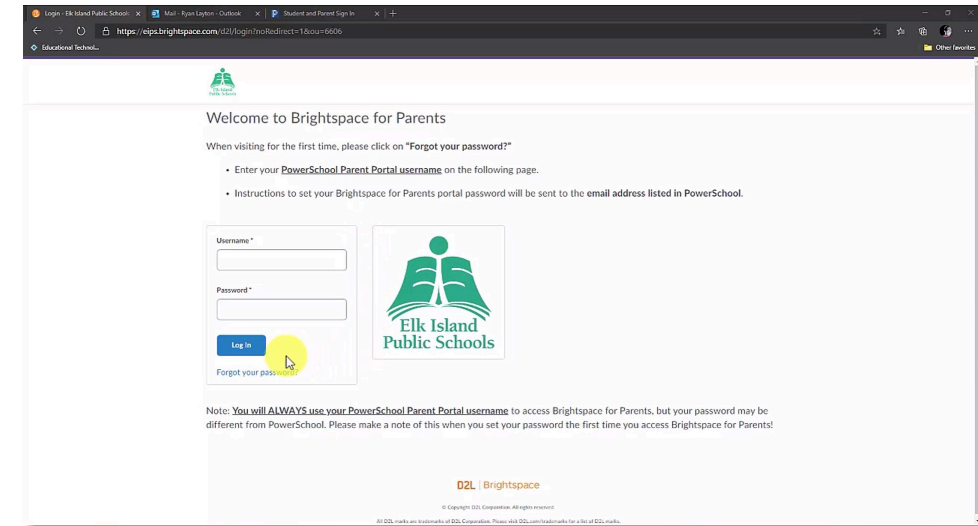
Learn more at eips.ca/schools/powerschool



Brightspace

- Online access to classroom updates, upcoming assignments, feedback from teachers and communication from the school and teacher, as applicable
- Separate portal access for parents and students
- One Brightspace for Parents account to link all children in the family together
- Your account follows each student as they move through the Division

Learn more at eips.ca/downloads/298577





Student Transportation

- Bus routes
- Bus passes
- Transportation fees
- Little Elk Island Adventure

Transportation fees are due June 30, 2021
and are paid online at [eips.ca/transportation/
transportation-fees/student-transportation-online-payments](https://eips.ca/transportation/transportation-fees/student-transportation-online-payments)



Student Transportation: Little Elk Island Adventure

Students and parents learn:

- How to be safe when around the bus
- What the Danger Zone is and where it is located
- How to board the bus and scan their bus pass
- How to sit properly on the school bus
- EIPS' Code of Conduct

Learn more at

eips.ca/transportation/little-elk-island-adventure



EIPS KINDERGARTEN CALENDAR 2021-22

 Regular School Day
 Early Dismissal for Students
 ☆ First Instructional Day (Semester 1 & 2)
 No School – Statutory or Paid Holiday
 No School for All Students and Staff
 No School for Students – Professional Learning/Operational Day

SCHEDULE A:
Mondays, Wednesdays
and select Fridays

SCHEDULE B:
Tuesdays, Thursdays
and select Fridays

Important Dates

Aug 30	Professional Learning Day
Aug 31	Operational Day
Sept 1	Classes Begin
Sept 6	Labour Day – Stat.
Oct 11	Thanksgiving Day – Stat.
Oct 18	Professional Learning Day
Nov 8 - 12	November Break
Nov 11	Remembrance Day – Stat.
Nov 12	Day-in-Lieu: Parent Teacher Interviews
Dec 22 - Jan 4	Christmas Break
Dec 24	Christmas Floater Day – Paid Holiday
Dec 27	Day-in-Lieu: Christmas Day – Paid Holiday
Dec 28	Day-in-Lieu: Boxing Day – Paid Holiday
Jan 3	Day-in-Lieu: New Year's Day – Paid Holiday
Jan 5	Classes Resume for Students
Jan 31	Professional Learning Day
Feb 1	Second Semester Begins
Feb 10 & 11	North Central Teachers' Convention
Feb 21	Family Day – Stat.
Mar 4	Professional Learning Day
Mar 25	Day-in-Lieu: Parent Teacher Interviews
Mar 28 - Apr 1	Spring Break
Apr 4	Classes Resume
Apr 15	Good Friday – Stat.
Apr 18	Easter Monday – Paid Holiday
May 6	Professional Learning Day
May 20	School Closure Day
May 23	Victoria Day – Stat.
June 21	National Indigenous Peoples Day – no exams
June 28	Last Instructional Day No Kindergarten Classes
June 29	Last Operational Day

S	M	T	W	T	F	S
1	2	3	4	5	6	7
8	9	10	11	12	13	14
15	16	17	18	19	20	21
22	23	24	25	26	27	28
29	30	31				

S	M	T	W	T	F	S
			1	2	3	4
5	6	7	8	9	10	11
12	13	14	15	16	17	18
19	20	21	22	23	24	25
26	27	28	29	30		

S	M	T	W	T	F	S
					1	2
3	4	5	6	7	8	9
10	11	12	13	14	15	16
17	18	19	20	21	22	23
24	25	26	27	28	29	30
31						

S	M	T	W	T	F	S
	1	2	3	4	5	6
7	8	9	10	11	12	13
14	15	16	17	18	19	20
21	22	23	24	25	26	27
28	29	30				

S	M	T	W	T	F	S
			1	2	3	4
5	6	7	8	9	10	11
12	13	14	15	16	17	18
19	20	21	22	23	24	25
26	27	28	29	30	31	

S	M	T	W	T	F	S
						1
2	3	4	5	6	7	8
9	10	11	12	13	14	15
16	17	18	19	20	21	22
23	24	25	26	27	28	29
30	31					

S	M	T	W	T	F	S
		☆	2	3	4	5
6	7	8	9	10	11	12
13	14	15	16	17	18	19
20	21	22	23	24	25	26
27	28					

S	M	T	W	T	F	S
		1	2	3	4	5
6	7	8	9	10	11	12
13	14	15	16	17	18	19
20	21	22	23	24	25	26
27	28	29	30	31		

S	M	T	W	T	F	S
					1	2
3	4	5	6	7	8	9
10	11	12	13	14	15	16
17	18	19	20	21	22	23
24	25	26	27	28	29	30

S	M	T	W	T	F	S
1	2	3	4	5	6	7
8	9	10	11	12	13	14
15	16	17	18	19	20	21
22	23	24	25	26	27	28
29	30	31				

S	M	T	W	T	F	S
			1	2	3	4
5	6	7	8	9	10	11
12	13	14	15	16	17	18
19	20	21	22	23	24	25
26	27	28	29	30		

S	M	T	W	T	F	S
					1	2
3	4	5	6	7	8	9
10	11	12	13	14	15	16
17	18	19	20	21	22	23
24	25	26	27	28	29	30
31						

EIPS offers full-day programming on alternating days.

- Monday, Wednesday and select Fridays, or
- Tuesday, Thursday and select Fridays

Find the Division calendar at eips.ca/calendar

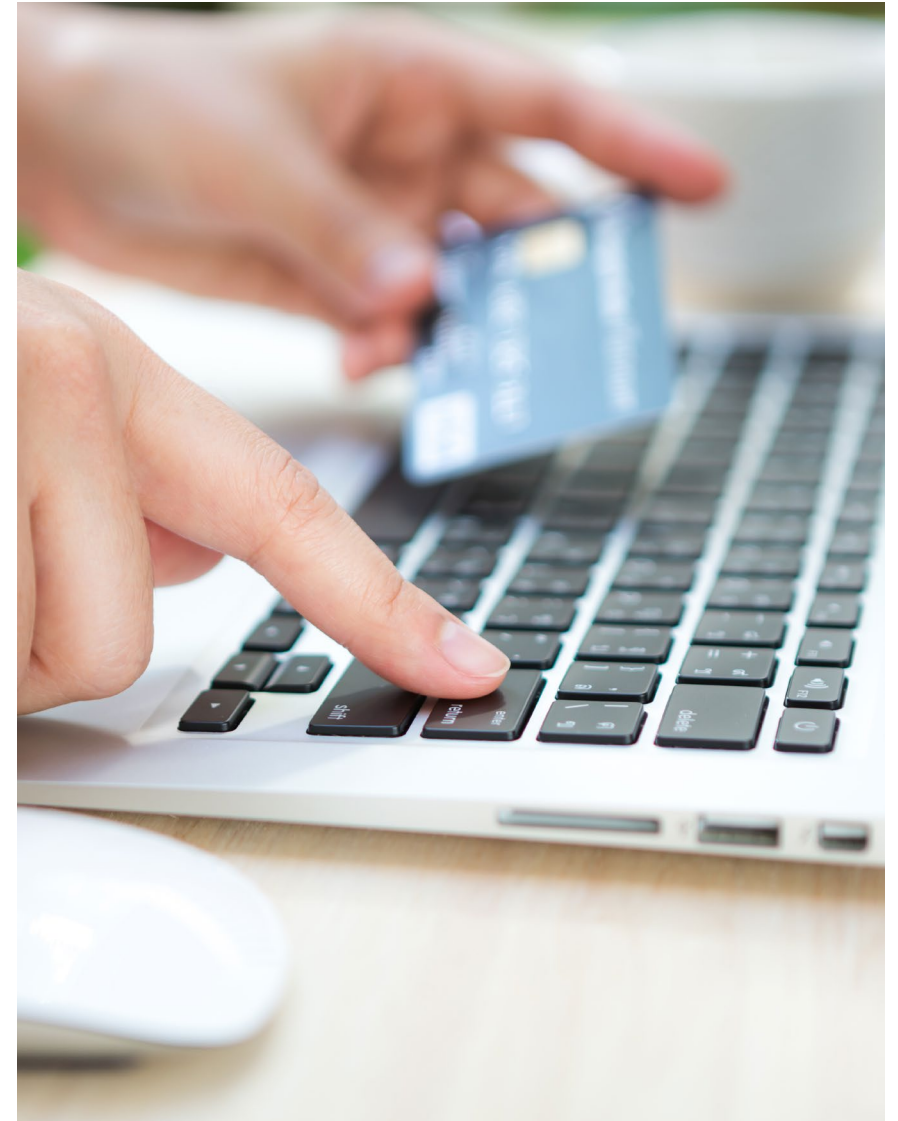
Visit the calendar page on the school's website for school-specific dates and events.

475
instructional
hours
per year

School Fees

- Paid online through the PowerSchool Parent Portal
- Assessed at the start of the year
- Others may be added throughout the year
- Fees are generally due within 30 days of being assessed
- Fee waiver policy

Learn more at eips.ca/schools/fees





School Supplies

- School Supply List will be posted on school website



Parent Involvement

- School Council
- Parent volunteers

Early Years Evaluation – Teacher Assessment (EYE-TA)

- Administered in the fall
- Uses teachers' regular observations and informal assessments
- Helps determine a child's progress and development in five key areas
 - Awareness of self and environment;
 - Social skills and approaches to learning;
 - Cognitive skills;
 - Language and communication; and
 - Physical development
- Assessment findings used to help plan instruction



Supports Available

- Occupational Therapist – Fine Motor Skills
- Speech Language Pathologist



Our School



- This is the front doors of our school. These are the only doors that Kindergarten uses. In the morning, please line up and we will come and let the students in when the bell goes. At the end of the day, please wait outside until we dismiss the students from the same doors.



- This is where students will put their outside shoes. The shoes racks are found just inside the front doors.



- This is where students will hang their coats and backpacks.



This is one of our classrooms where we will spend most of our time learning and having fun!

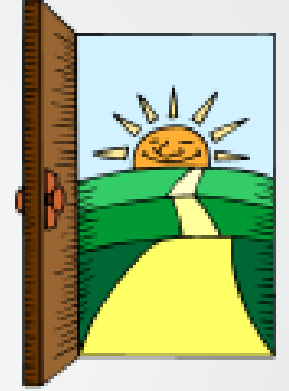


Kindergarten Hours



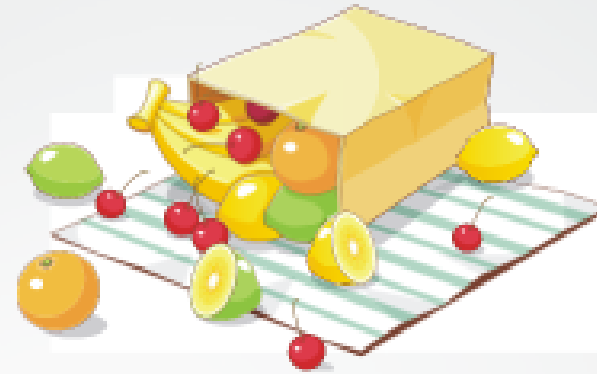
- Our school day runs from 8:25am- 3:05pm.
- **The first Wednesday of every month** is Early Dismissal. The day ends at 2:05pm.
- Supervision begins at 8:20 every morning by the drop off zone. Please wait until a supervisor is outside before leaving your child.
- If you are dropping your child off, please park on the street as the loop is for buses only.

Kindergarten Entrance



- The main doors located at the front of the school will be the **only doors** children will enter and leave the school by
- It is at this entrance where students and parents must wait until 8:25 where we will greet you and welcome students inside. Students will be dismissed at 3:05pm.

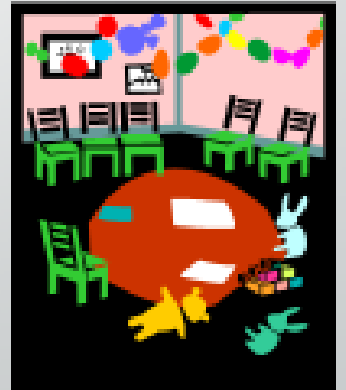
Snacks/Lunch



- provided by you each day for your child
- We encourage healthy options and **no nut products as we are a nut aware school.**
- Please be aware of food allergies
- Easy to open independently
- Please send food that does not require heating as we do not have microwaves

A Typical Day In Kindergarten

- Large Group Time – calendar, story, read-alouds, discussions etc.
- Structured Activities – journal drawing /writing, shared reading, fine motor activities
- Small group centers
- Play Centers
- Daily Physical Education .

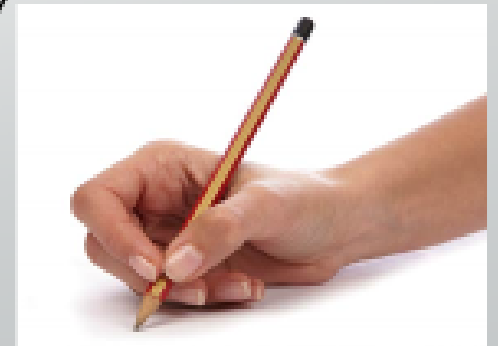


Odds and Ends

- Daily mailbags will be provided
- Absences/illness- Please email or call the school as well as the teacher. Please ensure you have an emergency contact listed in powerschool.
- Please send extra clothes for accidents/spills to keep at school in a labeled bag
- Label outdoor clothing (boots, mittens, hats etc.) A lot of children have the same items.
- Indoor shoes (Velcro-non-marking)
- Please label all school supplies (Pencils, crayons, etc). This helps us to keep track of supplies.

What Can We Work On At Home?

- Practice printing (in LOWER CASE) e.g. pencil grip, writing name etc.
- Scissors skills e.g. model and practice proper grip, non-dominant hand turns the paper etc.
- Dressing- aim for independence! E.g. zippers, putting shoes on etc. *We highly encourage Velcro or slip on indoor shoes. If your child will have tie up shoes, we do kindly ask that they know how to tie them independently.*
- Read. You can read together at home. Talk about the author, pictures, look at the words, discuss the 5 W's (Who, What, Where, When, Why)





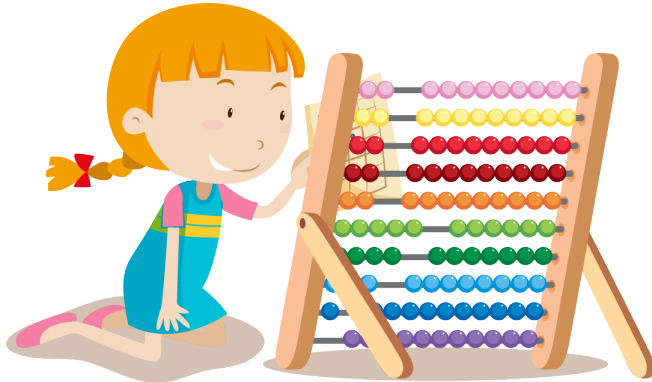
Communication and literacy



Motor skills



Social-emotional development



Numeracy



Self-help skills



Eye See, Eye Learn



Helpful Links

- eips.ca/kindergarten
- Facebook: facebook.com/ElkIslandPublicSchools
- Twitter: twitter.com/eips

- **Facebook:**
<https://www.facebook.com/pages/category/Elementary-School/James-Mowat-Elementary-1384973211740885/>

- **Twitter:**
https://twitter.com/jmw_elementary?lang=en